



"The Best Kept Secret in the Postal World"

HORIZONTAL MAILBOXES 900 SERIES

Recessed Installation

Constructed of all aluminum extrusion and materials. Standard 900 series horizontal mailboxes are available in "A" size compartments, 5" h X 6" w and configured in modules 3, 4 or 5 boxes wide and 5, 6 or 7 boxes high. Each 1/8" extruded aluminum door swings on a continuous hinge and is equipped with a 5 pin cylinder cam lock with 3 keys (1500 changes). Doors include permanent 3/4" high engraved identification for a neat, uncluttered appearance. Larger size boxes can be integrated into all modules for volume incoming mail as well as outgoing mail through a mail slot. Package delivery can be accommodated with the addition of parcel boxes with a dual locking system. All modules have standard 3/4" integral trim for stability, easy installation and a finished appearance when recessed into a wall opening. Consult our knowledgeable sales staff for assistance with customizing units for your specific need.

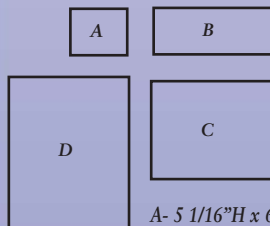
FRONT LOADING: Master door swings on a continuous hinge and features a top to bottom locking bar for security. One compartment is required for postal access and cannot be used for mail delivery but with the addition of a mail slot in the door it becomes an outgoing letter box. Postal access door is prepped to accept postal lock provided and installed by local postal authority.

REAR LOADING: All compartments are usable for incoming mail. Lift-off or hinged rear covers are available.

Custom size compartments, parcel boxes and modules*



AVAILABLE DOOR SIZES



A- 5 1/16"H x 6"W
 B- 5 1/16"H x 12 1/2"W
 C- 10 3/8"H x 12 1/2"W
 D- 15 3/4"H x 12 1/2"W



Directories
Top or Side
Mount



OPTIONS

- Snap-on-trim
- Mail slot
- High security door "A" size only
- High security locking system "A" size only
- Identification – Window/card holders
- Engraved plastic adhesive tabs
- Black filled engraving

Finishes

- Clear anodized aluminum
- Gold powder coat
- Silver powder coat
- Bronze powder coat

Private Use Options

- Spring latch locks
- Combination spring latch locks. Access doors keyed alike.

SEE SPECIFICATIONS AND OPTIONS ON BACK

Specifications & Options

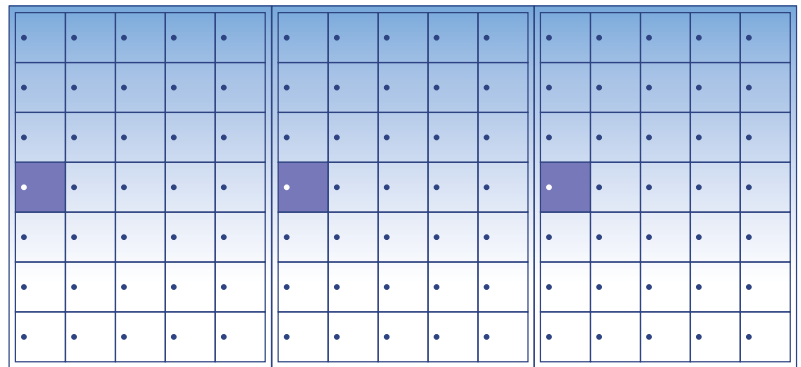
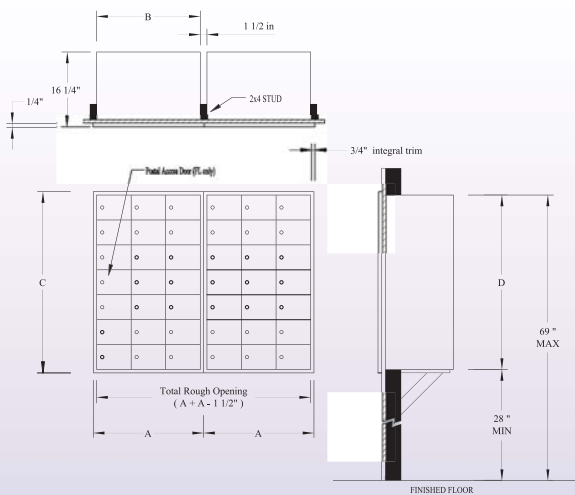
INSTALLATION AND DIMENSIONS FOR Horizontal Apartment Mailboxes 900 Series

Prepare rough opening in wall according to dimensions in chart below.

Level module. 3/4 in. bracketed plywood shelf is recommended. Shim as necessary to make unit level and square.

Securely fasten from inside unit to 2 x 4 support studs on either side using pre-drilled holes.

Complete installation instructions, including all U.S. Postal Service regulations, included with each module.



CALCULATING ROUGH OPENINGS

TO CALCULATE THE TOTAL ROUGH OPENING WIDTH FOR SIDE-BY-SIDE INSTALLATIONS, SUBTRACT 1 1/2" FROM TOTAL OVERALL WIDTH.

For example, the rough opening width for three 7H x 5W (Front Loading) units would be: $(36 \frac{1}{16} \text{ " x } 3) - 1 \frac{1}{2} \text{ " } = 106 \frac{11}{16} \text{ "}$.

MODULE CONFIG.	MODEL NUMBER*	FRONT LOADING (FL)		REAR LOADING (RL)			HEIGHT		DEPTH
		OVERALL	ROUGH	MODEL NUMBER*	WIDTH		OVERALL	ROUGH	
					A	B			
7H x 3W	900 FL-20	23 1/8	21 5/8	900 RL-21	21 9/16	20 1/16	40 7/16	38 15/16	16 1/4
7H x 4W	900 FL-27	29 5/8	28 1/8	900 RL-28	28 1/32	26 9/16	40 7/16	38 15/16	16 1/4
7H x 5W	900 FL-34	36 1/16	34 9/16	900 RL-35	34 9/16	33 1/16	40 7/16	38 15/16	16 1/4
6H x 3W	900 FL-17	23 1/8	21 5/8	900 RL-18	21 9/16	20 1/16	35 1/16	33 9/16	16 1/4
6H x 4W	900 FL-23	29 5/8	28 1/8	900 RL-24	28 1/32	26 9/16	35 1/16	33 9/16	16 1/4
6H x 5W	900 FL-29	36 1/16	34 9/16	900 RL-30	34 9/16	33 1/16	35 1/16	33 9/16	16 1/4
5H x 3W	900 FL-14	23 1/8	21 5/8	900 RL-15	21 9/16	20 1/16	29 11/16	28 3/16	16 1/4
5H x 4W	900 FL-19	29 5/8	28 1/8	900 RL-20	28 1/32	26 9/16	29 11/16	28 3/16	16 1/4
5H x 5W	900 FL-24	36 1/16	34 9/16	900 RL-25	34 9/16	33 1/16	29 11/16	28 3/16	16 1/4

All Dimensions in Inches

WHY SECURITY?

Quality mailboxes, personalized customer service, competitive prices, and unsurpassed lead times.

Marketing through an international network of independent distributors, Security Manufacturing Corporation offers mailboxes designed for optimum durability and maximum security.

A wide selection is available, including USPS approved horizontal and vertical mailboxes for apartments, cluster box units (CBUs) for neighborhoods, and locking mailboxes for residences.



Security Manufacturing Corporation also offers mailboxes for non-postal delivery at universities, schools, and private mail centers.

"A Single Source For All Your Mailbox Needs"



www.securitymanufacturing.com